

WE **are**
HERE

HISAKAWORKS S.E.A. SDN. BHD.

Company No. 671059-K
No 2, Jalan TP 2, Taman Perindustrian SIME UEP,
47600 Subang Jaya, Selangor, Malaysia.
Tel : +603 8081 4185/ +603 8081 1634 - 5
Fax : +603 8081 7185
Email : heatexc@hisaka-asia.com

(Local Sales Office)

PENANG OFFICE

No. 2680, 2nd Floor, Jalan Chain Ferry,
Taman Inderawasih, 13700 Perai, Penang.
Tel : +6016 201 8039
Fax : +604 390 8588

JOHOR OFFICE

30-02, Jalan Molek 1/10,
Taman Morek, 81100 Johor Bahru, Johor.
Tel : +6016 228 4209
Fax : +607 351 6840

HISAKAWORKS SINGAPORE PTE LTD

No 18 Boon Lay Way,
#02-118 Trade Hub 21,
Singapore 609966.
Tel : +65 6897 8489
Fax : +65 6686 4579
Email : heatexc@hisaka-sing.com

HISAKAWORKS S.E.A. SDN. BHD.
(Philippines Representative Office)

Level 20-1, vOffice, One Global Place,
25th Street and 5th Ave., Bonifacio Global City,
Taguig City, 1632 Philippines.
Tel : +63 2224 4129
Fax : +63 2224 4130
Email : hisapino@hisaka-asia.com

HISAVINA (Vietnam Representative Office)

HO CHI MINH CITY OFFICE
Hoang Dan Building, 47 - 49, Hoang Sa Street,
Da Kao Ward, District 1, Ho Chi Minh City,
Vietnam.
Tel : +84 8 3910 7355
Fax : +84 8 3910 7356
Email : hisavina@hisaka-asia.com

HANOI OFFICE

8TH Floor, Sannam Building,
78 Duy Tan St., Dich Vong Hau Ward,
Cau Giay Dist., Hanoi.
Email : heatexc@hisaka-asia.com

PT HISAKAWORKS INDONESIA

Ruko Grand Aries Niaga,
Blok E 1 No. 3H, Jalan Taman Aries,
Jakarta Barat, Jakarta 11620, Indonesia.
Tel : +6221 293 192 35
Email : hisakindo@hisaka-asia.com

HISAKA WORKS (THAILAND) CO., LTD

BANGKOK HEAD OFFICE
825 Phairojkijja Tower,
12th Floor Debaratana Road,
Bangna-Nua, Bangna, Bangkok 10260.
Tel : +(66) 2744 3287-9
Fax : +(66) 2744 3286
Email : leong@hisaka-thai.com

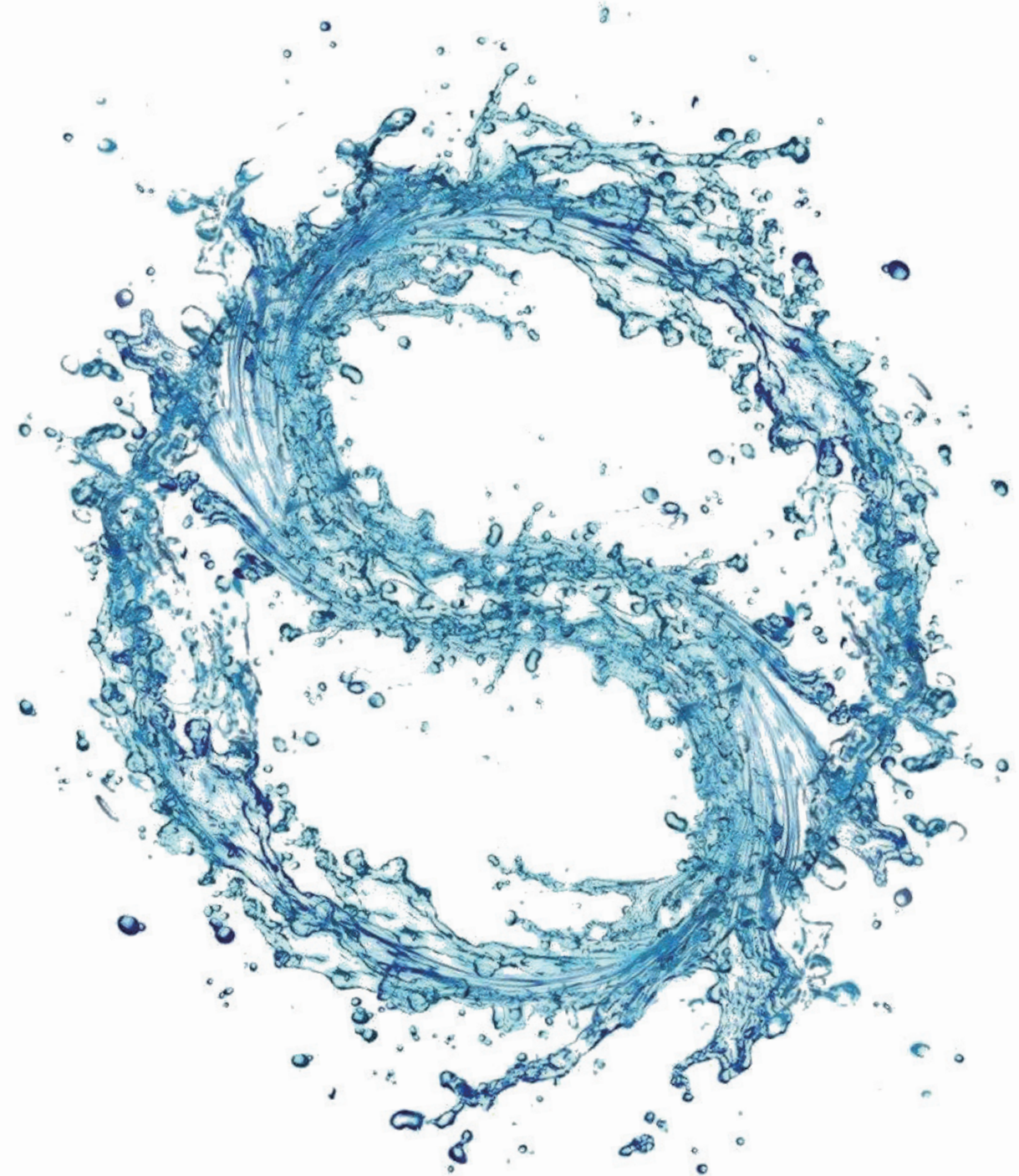
SATTAHIP BRANCH

222/28 Moo. 10, Eastiny Park 5 Village,
Bang Saray, Sattahip, Chonburi 20250.
Tel : +(66) 3819 9819
Fax : +(66) 3819 9820
Email : heatexc@hisaka-thai.com

www.hisaka-asia.com

HE-CE005000
16.05.700.YMZN

Hot Water System

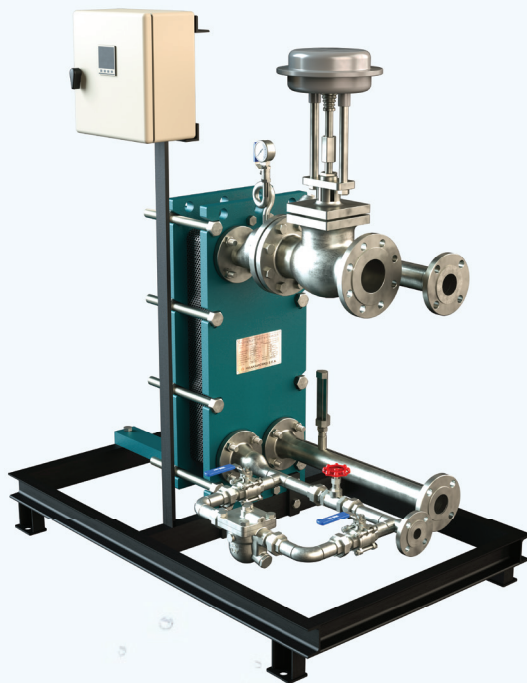


HISAKA

HISAKA Hot Water System

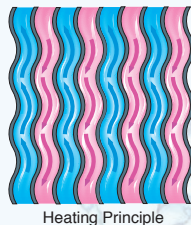
The Thermal Solution Company

Just One Touch
to Get Hot Water
Instantly



◆ Experienced Plate Heat Exchanger Manufacturer

As a specialist in thermal engineering, HISAKA hot water production equipment is safe and reliable to use. We have been developing highly versatile performance products throughout the years of experience in the design and manufacturing of our Plate Heat Exchanger (PHE) using innovative and leading technology.



Heating Principle

◆ Effective Heat Usage

Compared to S&T heat exchangers, PHE is more compact and heat transfer is more co-efficient. Hot water can be supplied in a short time.

◆ Automatic Temperature Control

Equipped with temperature sensor and pneumatic controller, steam side valve will adjust automatically to prevent overheating on hot water side. Ensuring consistency and safety.

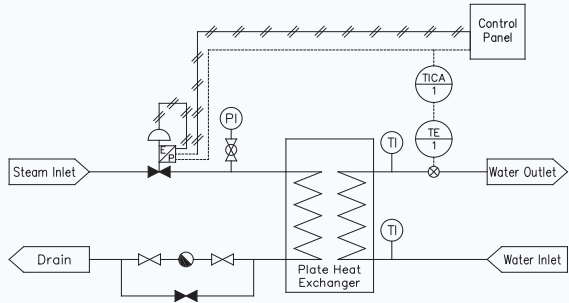
◆ Clean Hot Water

HISAKA hot water system is an indirect type to ensure the quality of water.

Specifications

MODEL		HWS-200	HWS-350	HWS-500	HWS-800
Max Heat Duty [kW]		207	355	533	830
Max Steam Flow Rate [kg/h]		350	600	900	1400
Max Water Flow Rate [m³/h]		6.5		25	
PHE Model		RX-025A-KNHJR-XX		LX-025A-TNHJR-XX	
Connection Size for Steam Side	In	50A	65A	80A	100A
	Out	25A	32A	40A	50A
Connection Size for Water Side	In/Out	25A		50A	
Dimension (LxWxH) (mm)		1150 x 730 x 1400		1600 x 930 x 1600	

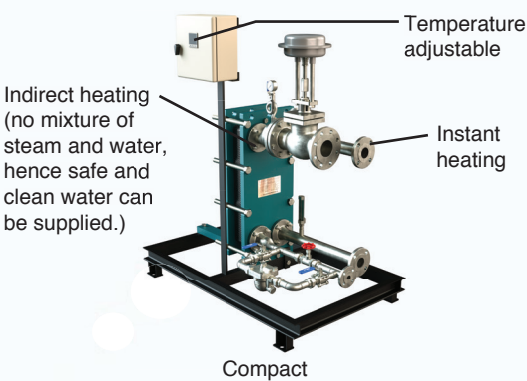
Schematic diagram



Utility Requirement

Steam pressure supplied	0.3 MPaG
Water pressure supplied	Max 1.0 MPaG
Power supply	100 ~ 240 VAC
Air supply	0.14 - 0.7 MPaG

Features



Applications



F&B



CIP cleaning



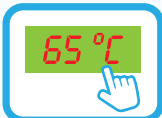
Factory

Easy to Operate

Turn On/
Off switch



Temperature
control



Steam flow rate will respond to set up temperature in real time.

Advantages

Cleaning

Generally, the structural cleaning of the spiral tube heat exchanger has many depth angles. It is easy to cause deformation and damage the heat exchanger after attempting to clean the dirt. However, HISAKA PHE does not have the depth angle and it's easy to do cleaning.

One Stop Solutions

As the PHE manufacturer, we are able to provide one stop solutions for the customer by supplying the units, until after sales services.

Low Cost

PHE is more economical alternative to S&T heat exchangers for typical industrial water-heating applications.

Fast response

Professional after sales services team will respond to you within 24 hours.

Lead Time

Maintenance & servicing are able to be completed in shorter lead time.